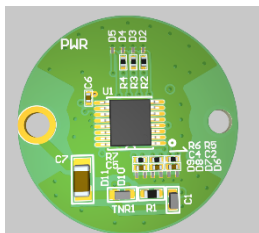
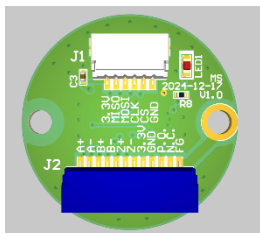


Step motor Encoder Specification			
<b>Model</b>	<b>MS28J-ER</b>	<b>Editor</b>	<b>SR, Lee</b>
<b>Number</b>	<b>RMN-02500-28J-N5-I2</b>	<b>Date</b>	<b>2025-3-2</b>

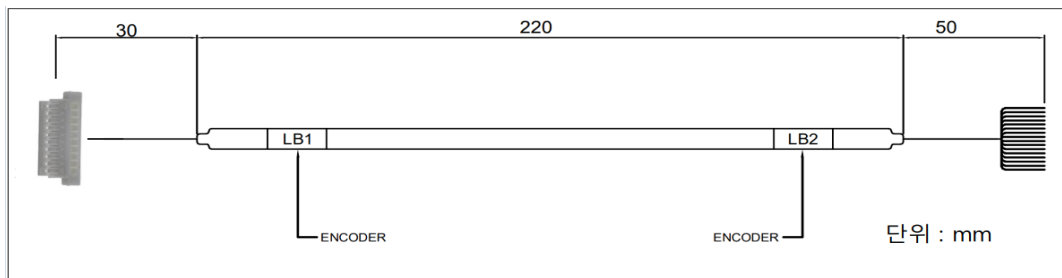
### 1. Encoder Spec.



5

Type		Specification
Sensor Board	Sensor Type	Magnetic Angle Encoder
	Resolution	2,500PPR~ (Resolution Changeable)
	Connector	12pin connector(ABZ+F.G) , 6pin connector(SPI)
	Type	Incremental (10pin)+F.G
	Size	PCB : $\Phi 24$
	I/O	ABZ differential
	Power	3.3V
Magnet	Polarity	2-pole Magnet s
	Size	6pi (Height : 2mm)

## 2. Pin-map

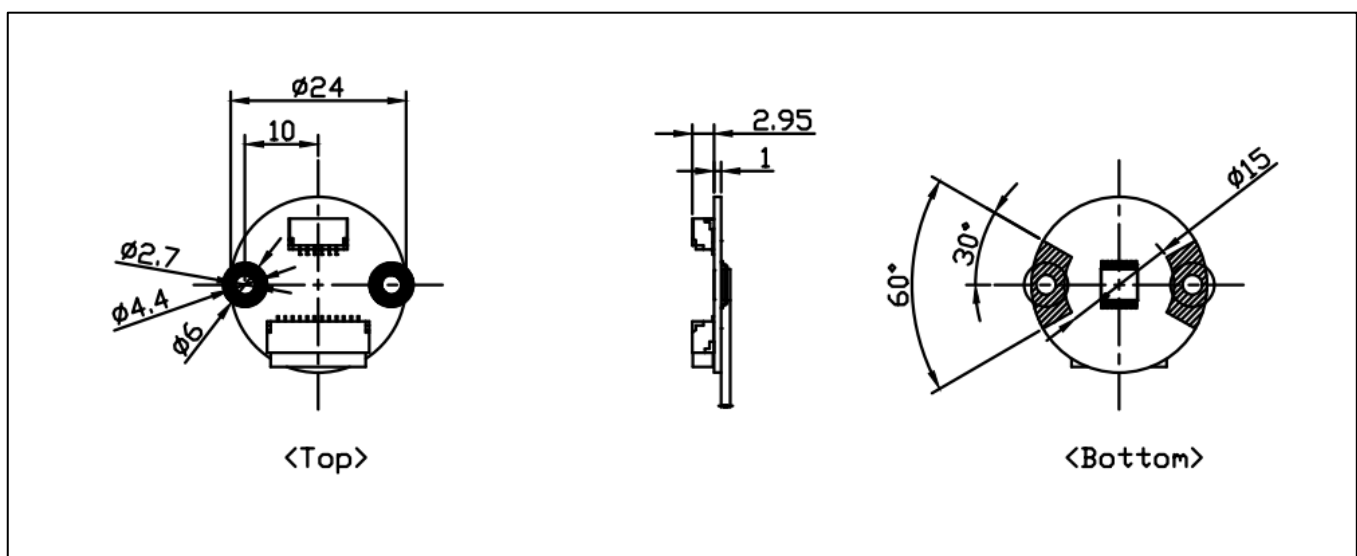


No	Name	Color
1	A	Orange
2	A-	Blue
3	B	Yellow
4	B-	Gray
5	Z	Purple
6	Z-	White
7	VDD	Red
8	GND	Green
9	Reserved	-
10	Reserved	-
11	Reserved	-
12	F.G	Mesh line

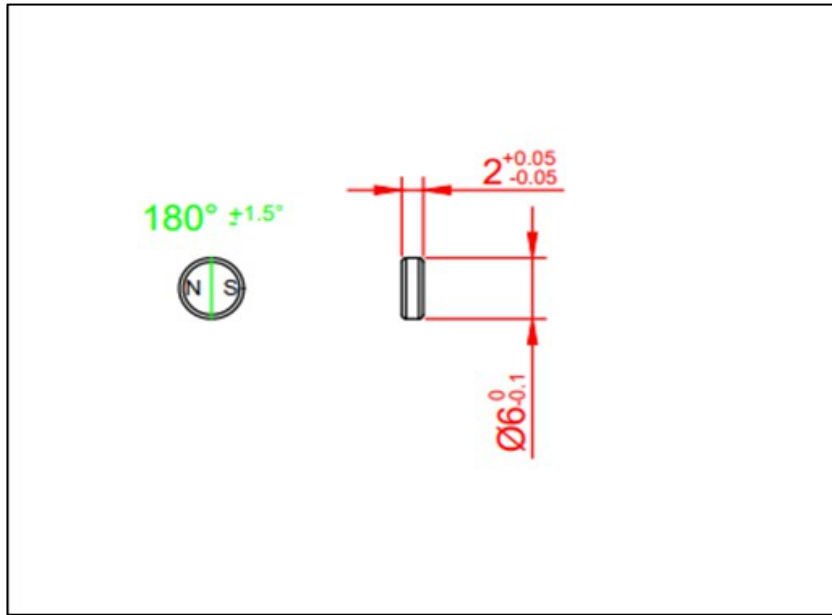
- Connector : SM12B-SRSS-TB(JST)
- Cable : SHR-12B-S (10pin+F.G / 1mm pitch / 28AWG), UL2835)

## 3. Dimension

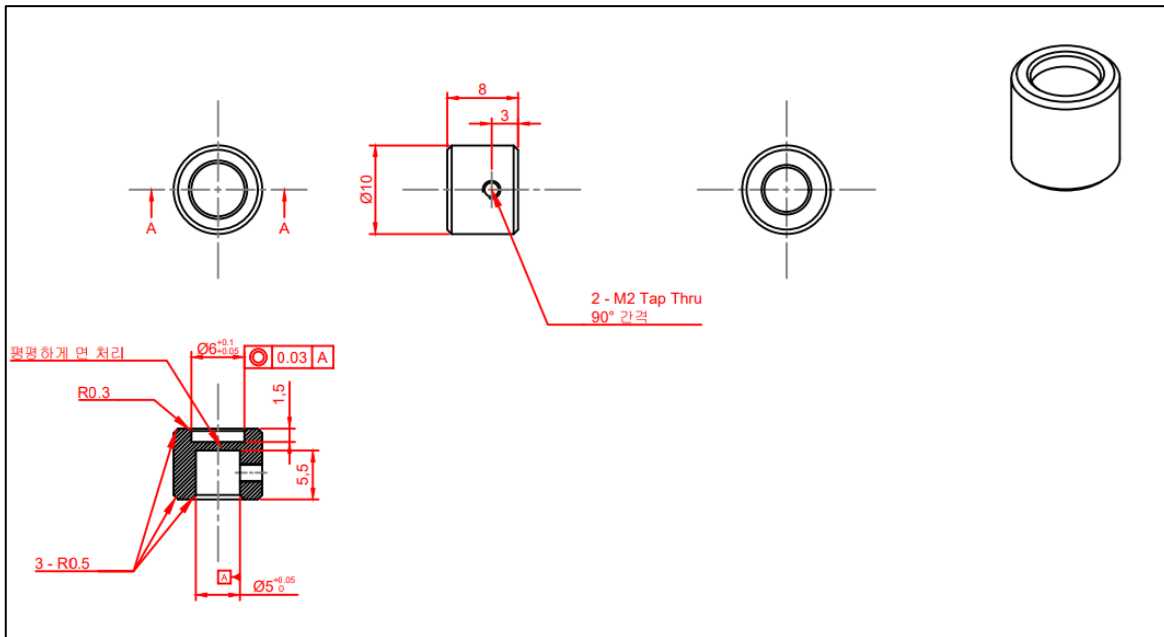
### 5-1) PCB



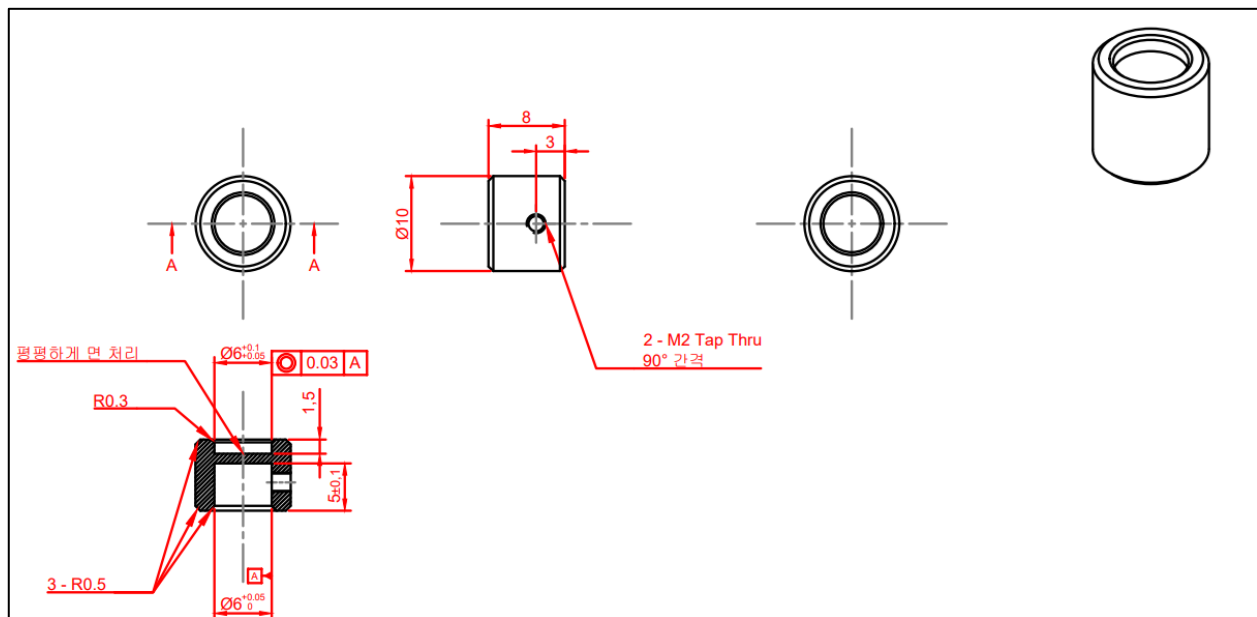
### 5-2) Magnet



### 5-3) Magnet Bracket (6\*5PI, 6PI)



- Magnet Bracket 5Φ



- Magnet Bracket 6Φ

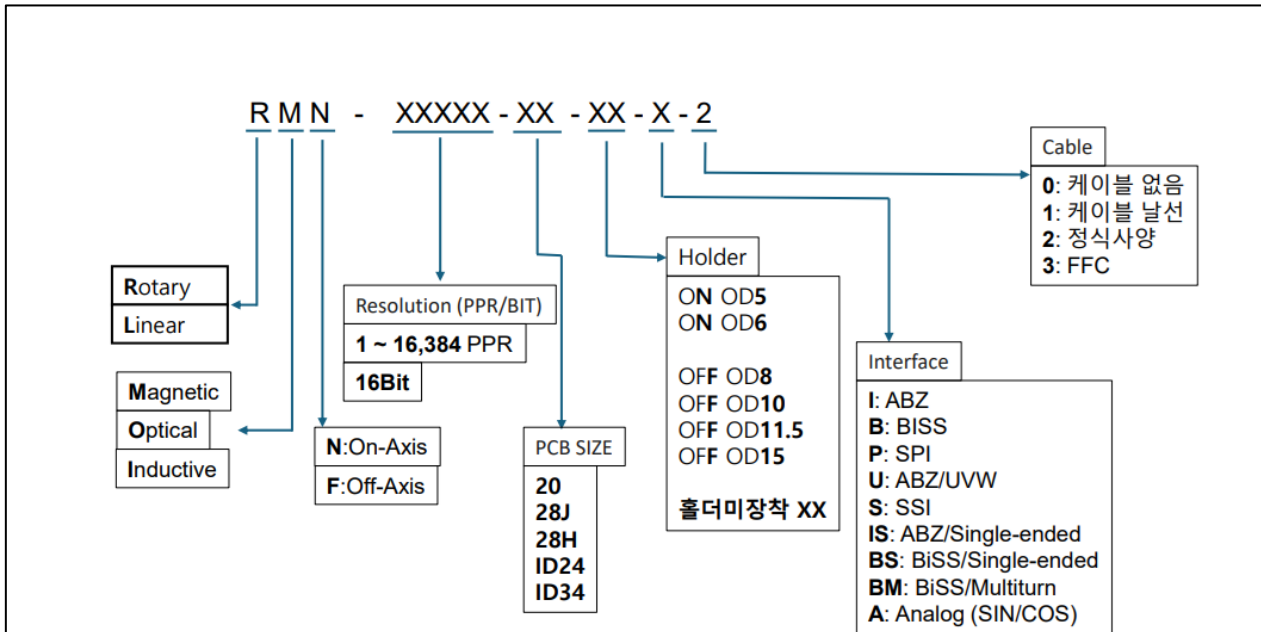
#### 4. Delivery list

No	Name	Quantity
1	PCB	1ea
2	Magnet	1ea
3	12pin Cable	1ea
4	Magnet Bracket	1ea

#### 5. Option

No	Name	Quantity
1	Calibration Tool	1ea
2	Cable	1ea
3	Magnet Bracket	1ea

## 6. Naming Rules



## 7. History

Version	Date	History
Rev 1.0	2025.03.02	Initial release